

B-cell activating factor and IL-21 levels predict treatment response in autoimmune hepatitis

Maaïke Biewenga, Sebastiaan Heïdt, Manon Vergunst, Camiel M.J. Marijnissen,
Rob A. de Man, Annemiek A. van der Eijk, Adriaan J. van der Meer, Leendert A.
Trouw, Bart van Hoek

Table of contents

Fig. S1.....	2
Fig. S2.....	3
Fig. S3.....	4

Fig. S1: gating strategy for B-cell subpopulations

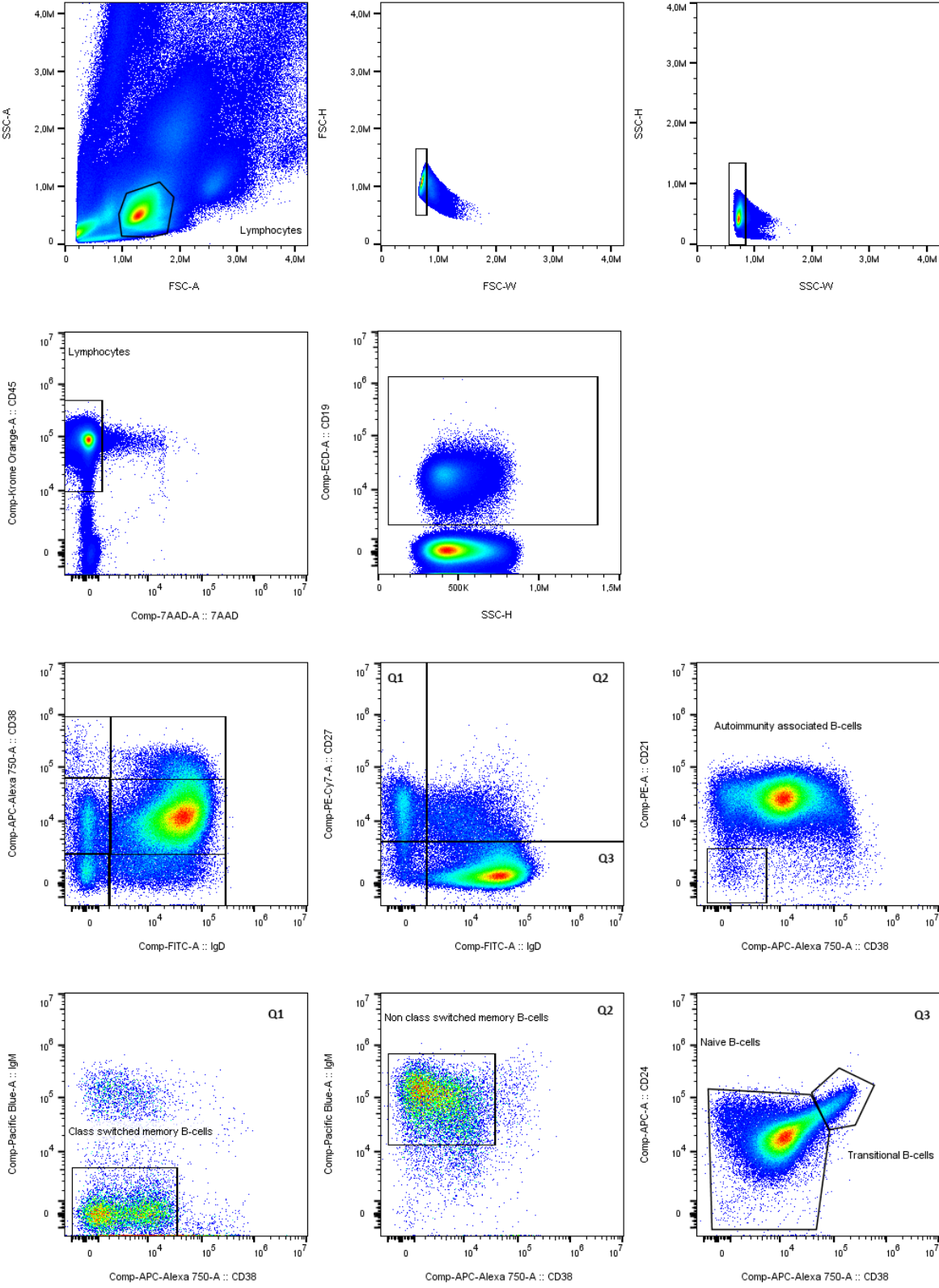


Fig. S2: correlation between BAFF, IL-21, ALT corrected for the upper limit of normal and IgG

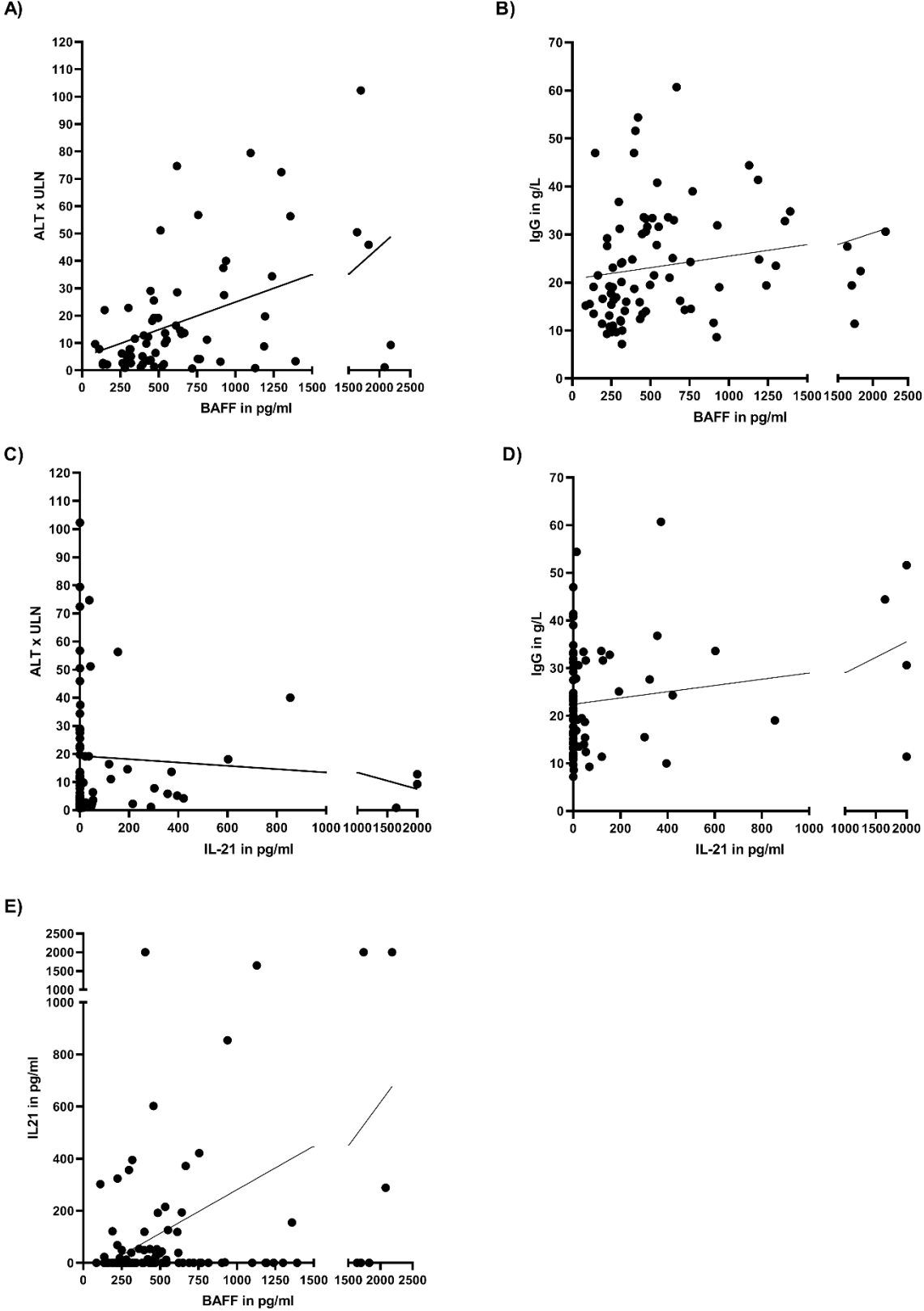


Fig. S3: Prevalence of the Bm1-5 B-cell classification in AIH patients and healthy controls. All B-cell populations are expressed as % of B-cells.

